

# **Report on Attendance Patterns 2013-2023**

# Good to Great

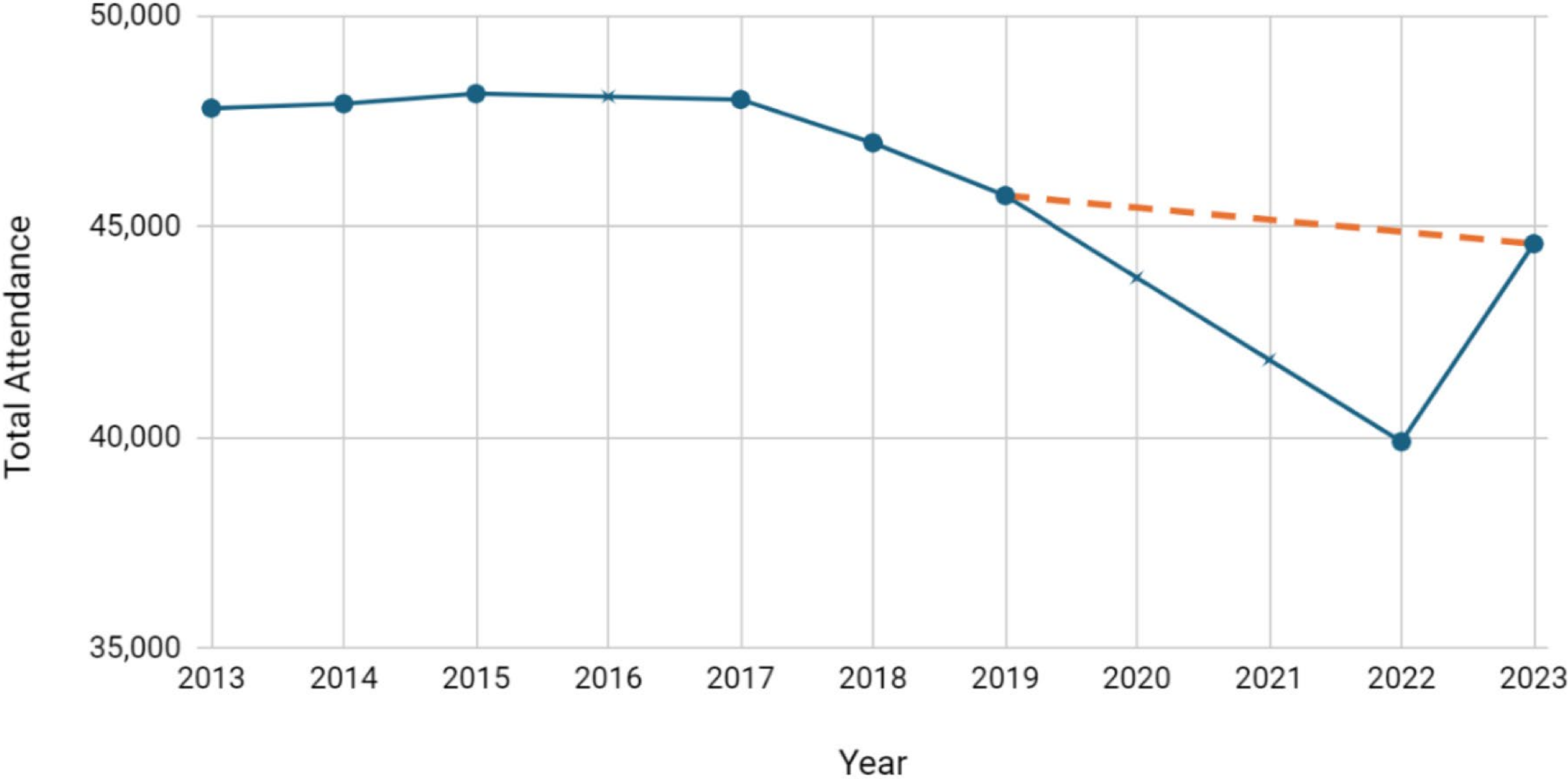
By Jim Collins



'... you must maintain unwavering faith that **you can and will prevail in the end**, regardless of the difficulties, and at the same time, have the **discipline** to confront **the most brutal facts of your current reality**, whatever they might be.'

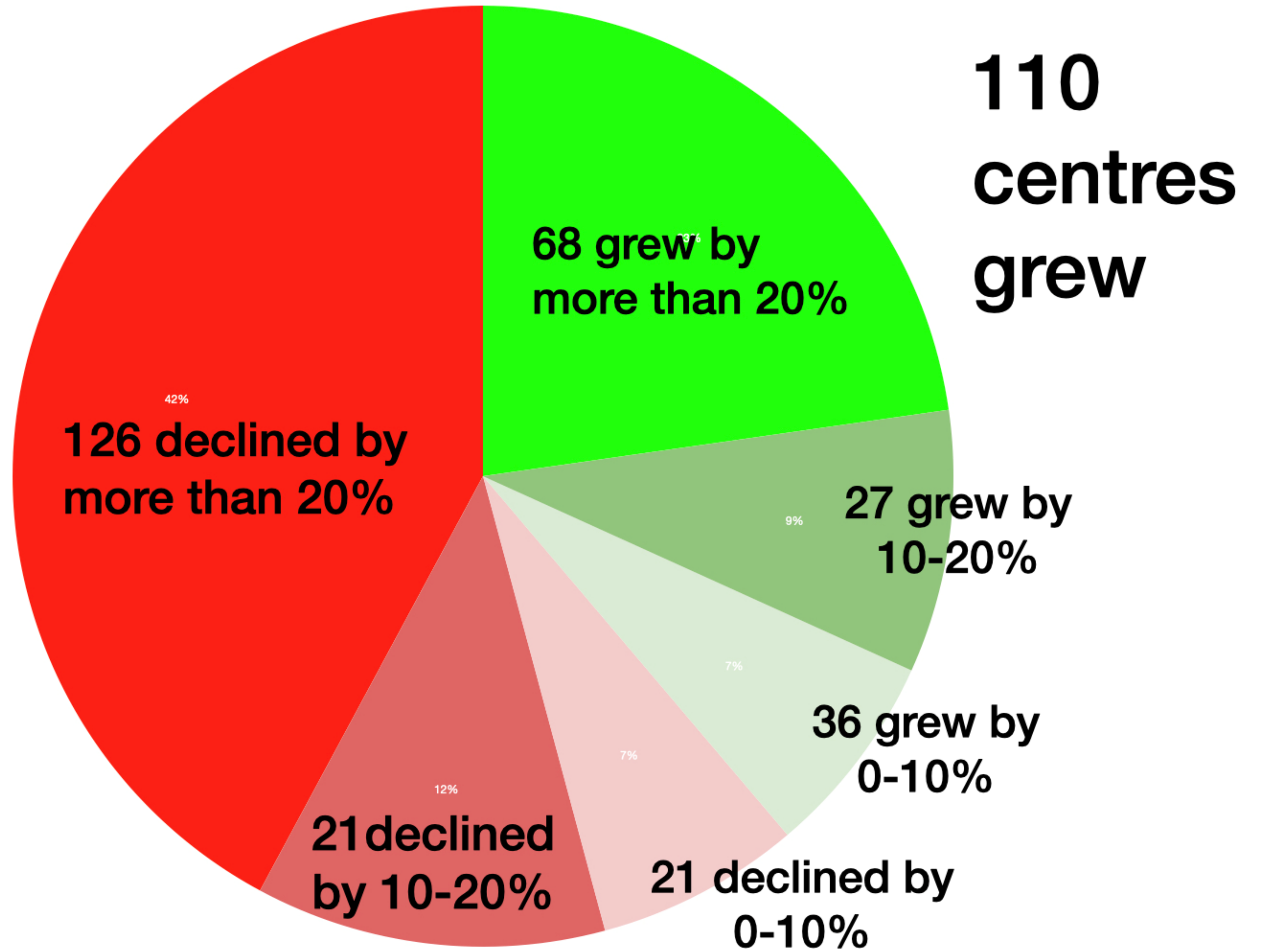
# Diocesan Attendance 2013 - 2023

Figures for years 2016, 2020 & 2021 not available: see para. 27





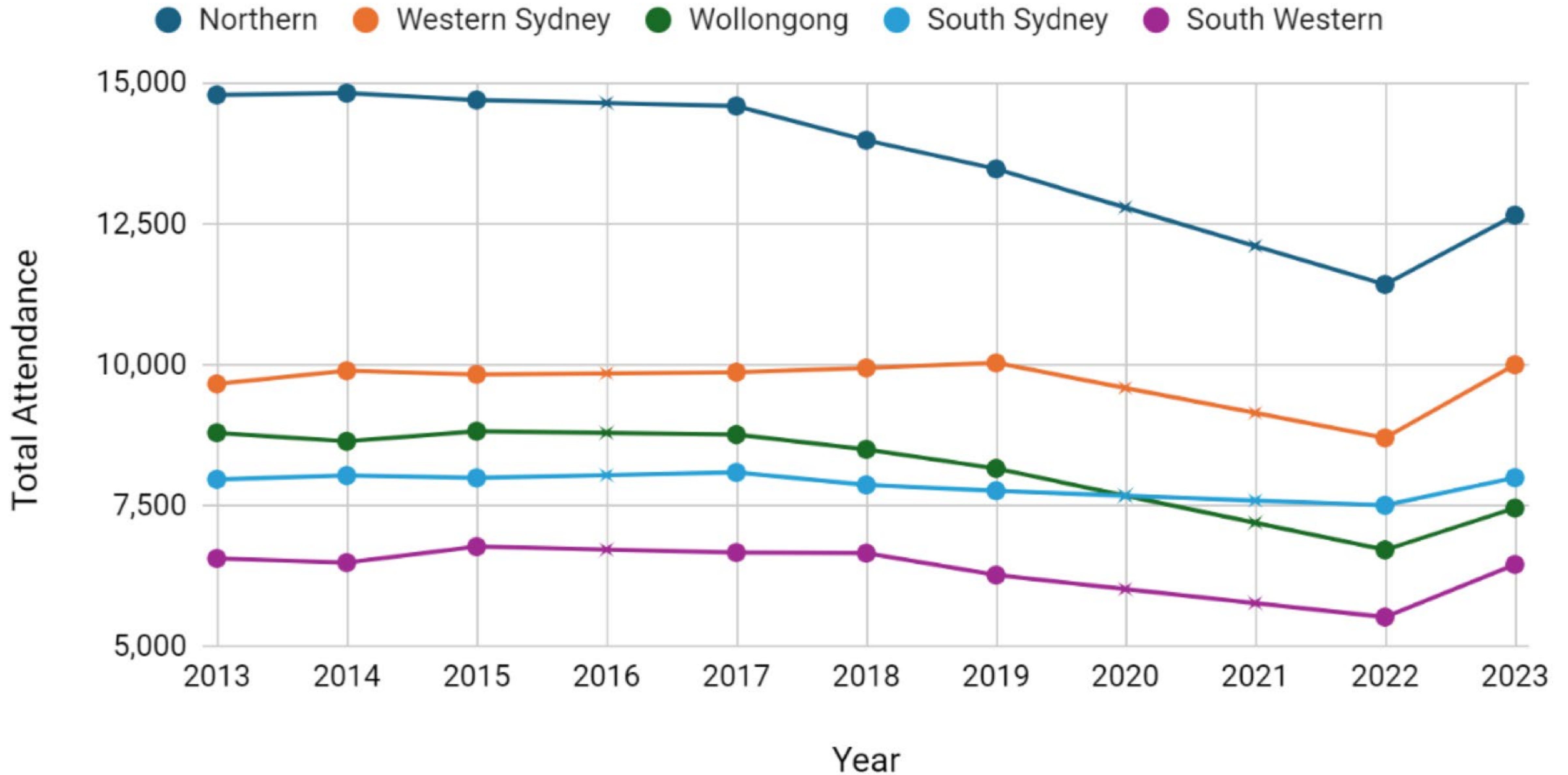
**189  
centres  
declined**



**110  
centres  
grew**

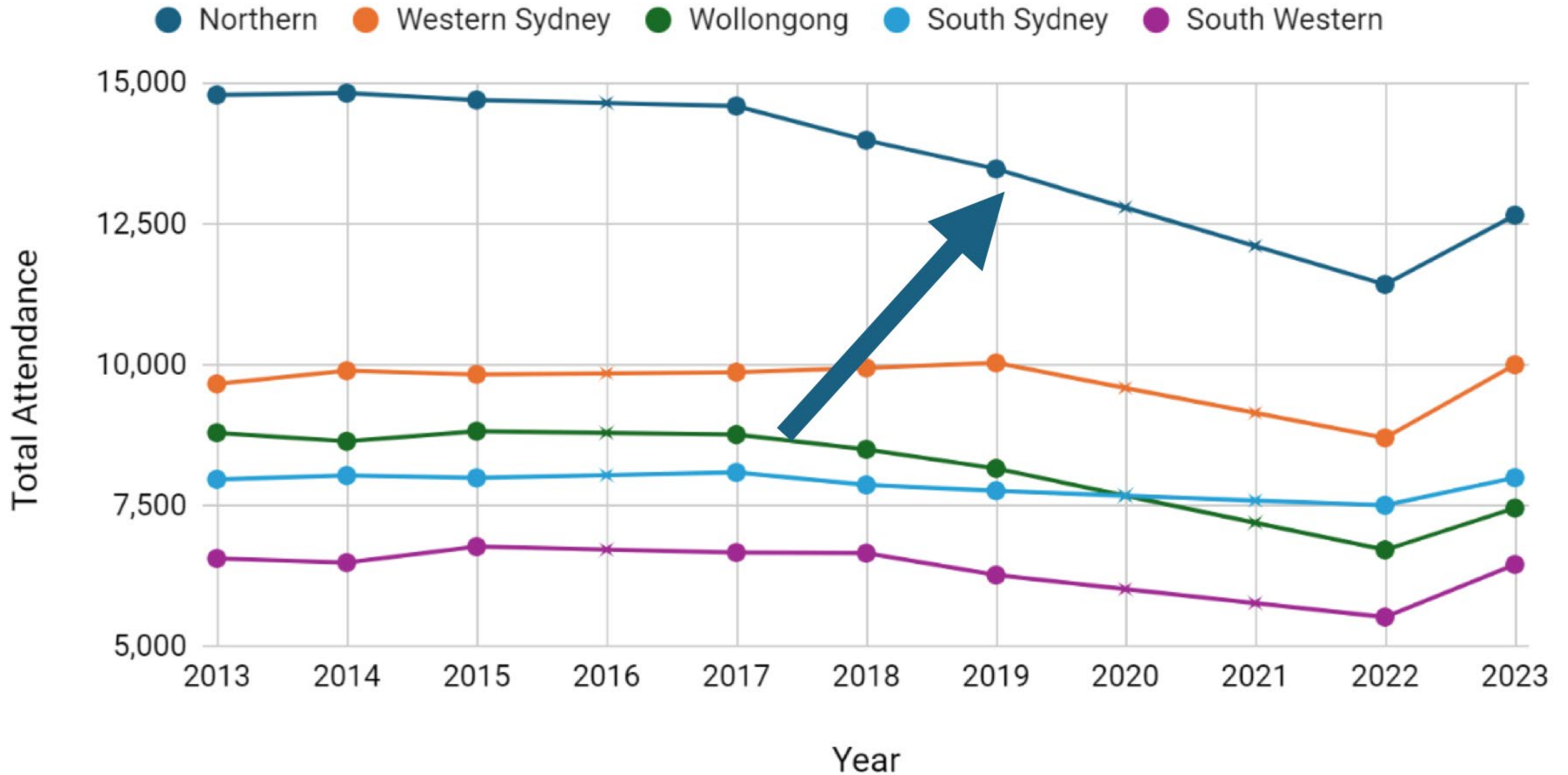
# Regional Attendance 2013 - 2023

Figures for years 2016, 2020 & 2021 not available: see para. 27



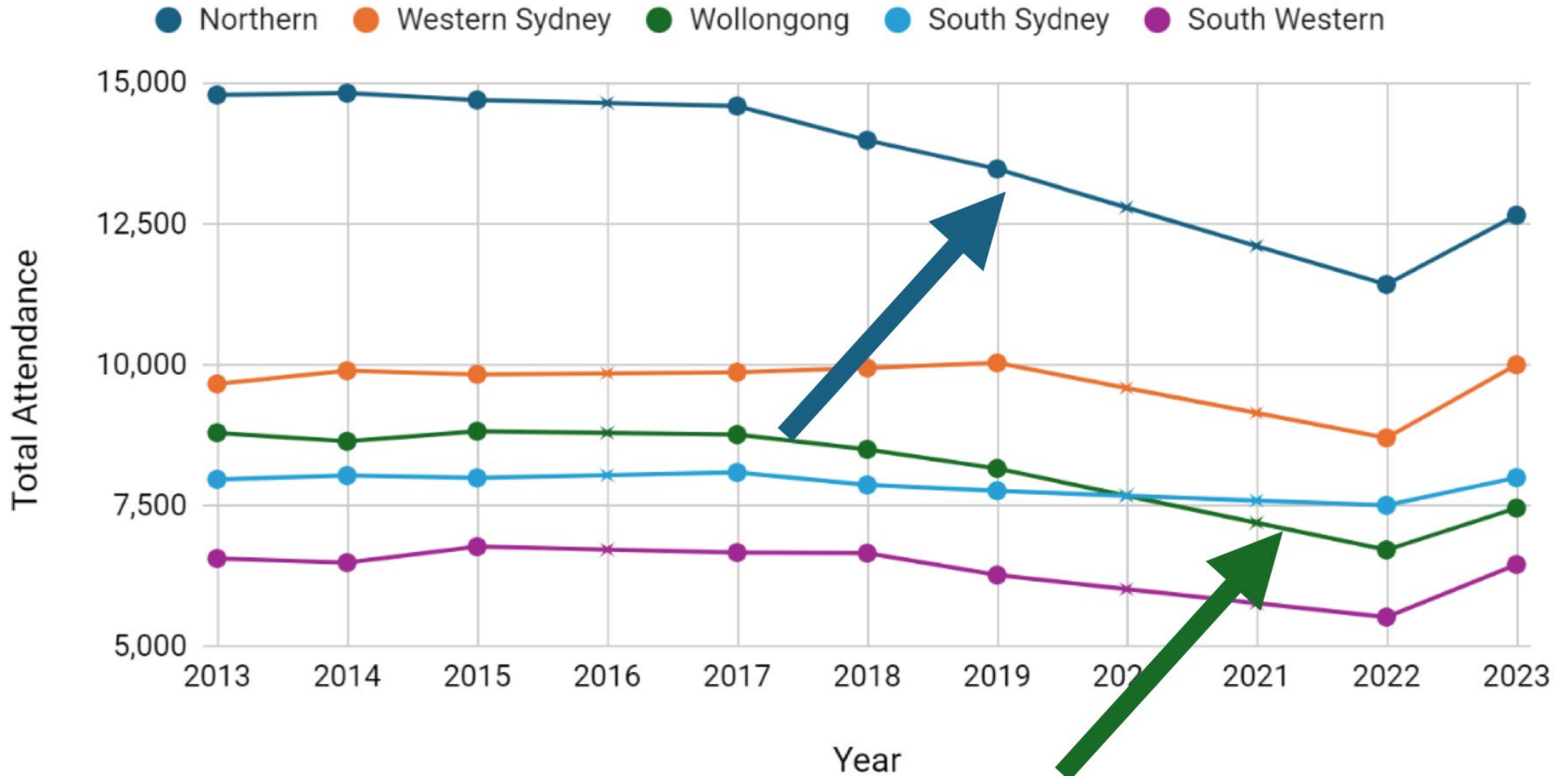
# Regional Attendance 2013 - 2023

Figures for years 2016, 2020 & 2021 not available: see para. 27



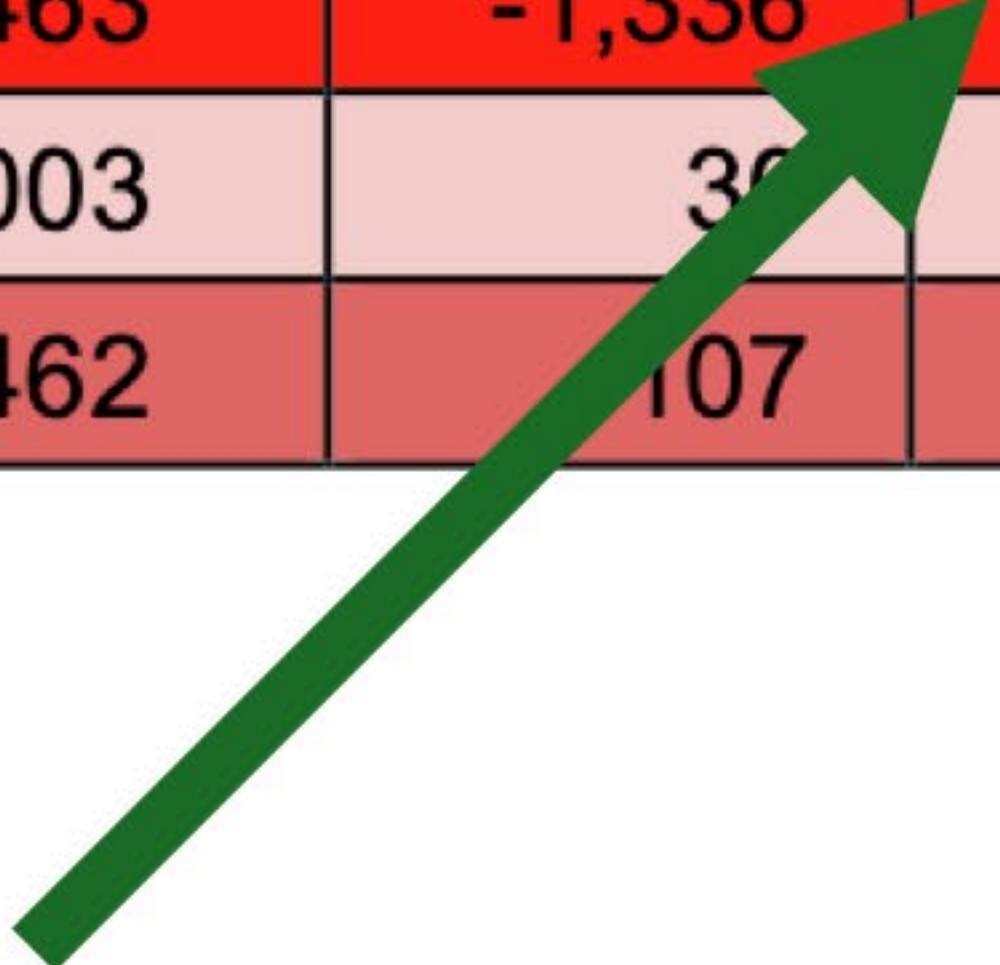
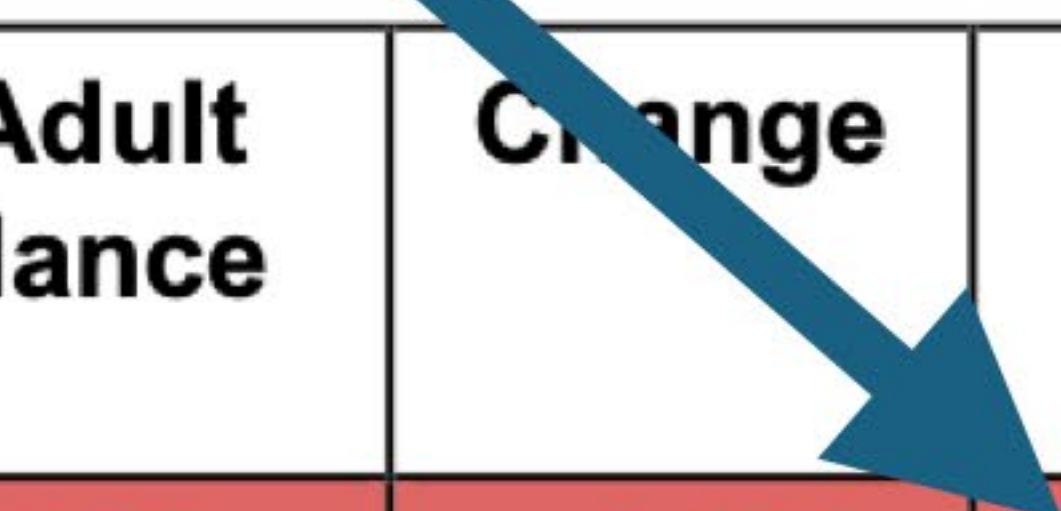
# Regional Attendance 2013 - 2023

Figures for years 2016, 2020 & 2021 not available: see para. 27



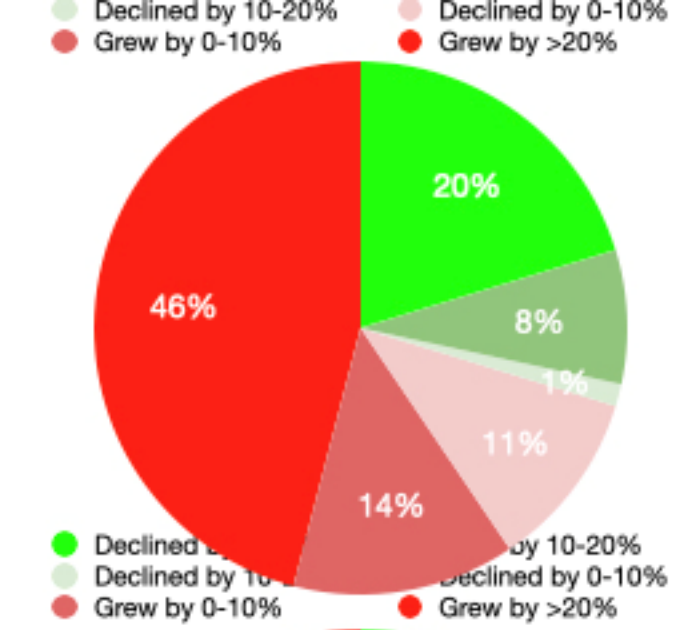


# Attendance by region

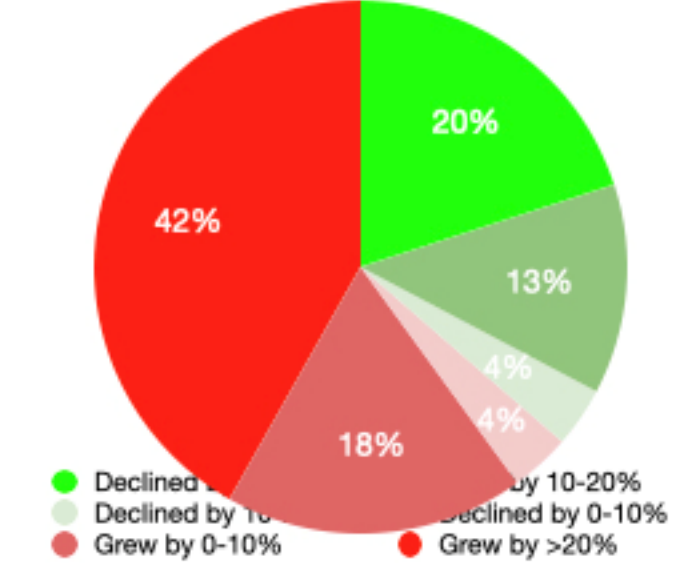


Region	2013 Adult Attendance	2023 Adult Attendance	Change	%	Adjusted for Population Change
Northern	14,793	12,659	-2,134	-14.4%	-20%
Western Sydney	9,667	10,005	338	3.5%	-9%
Wollongong	8,799	7,463	-1,336	-15.2%	-22%
South Sydney	7,973	8,003	30	0.4%	-3%
South Western	6,569	6,462	-107	-1.6%	-12%

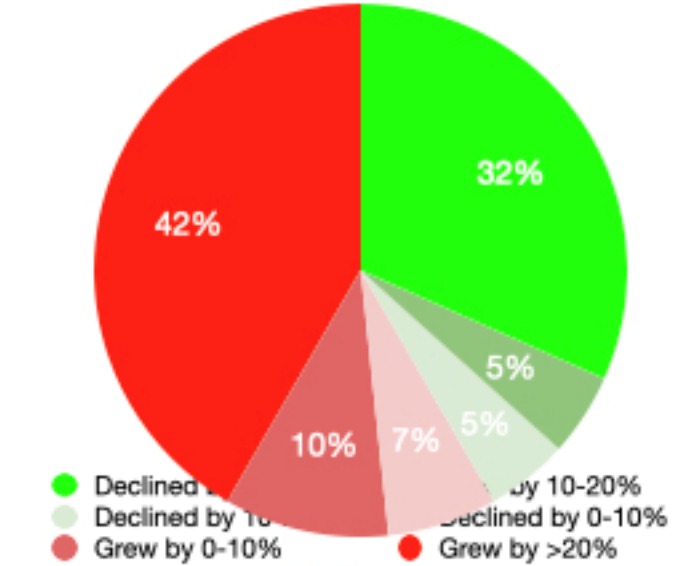
Northern Region - 50 declined, 24 grew



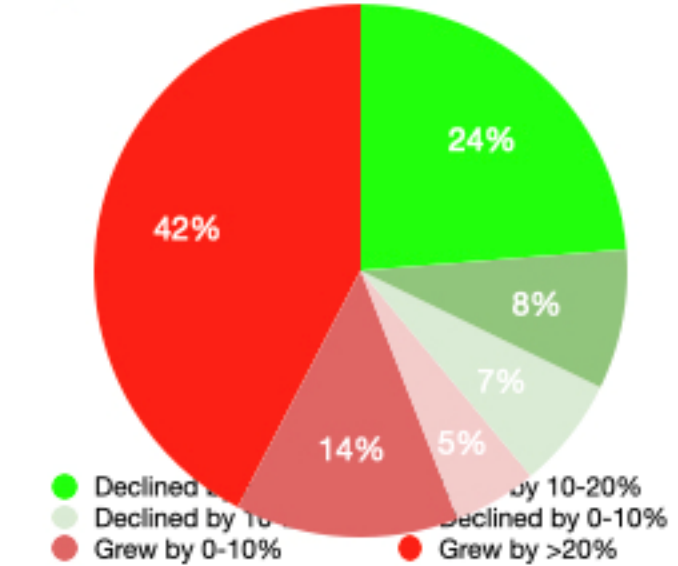
Wollongong - 40 declined, 15 grew



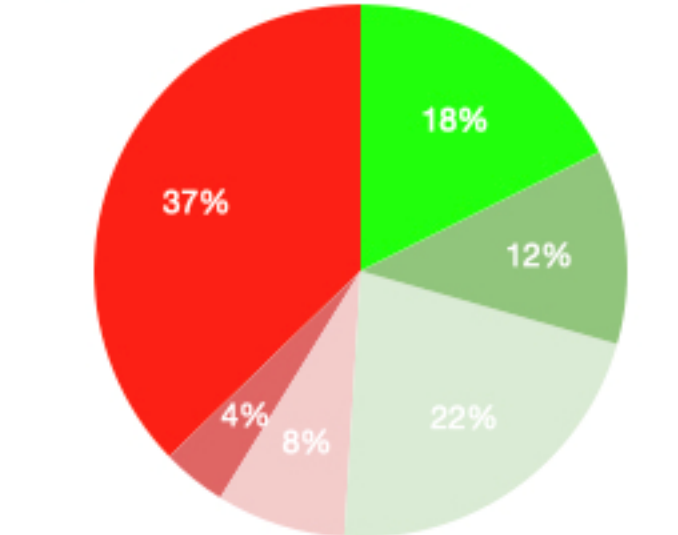
South Sydney - 34 declined, 26 grew



Western Sydney - 38 declined, 21 grew

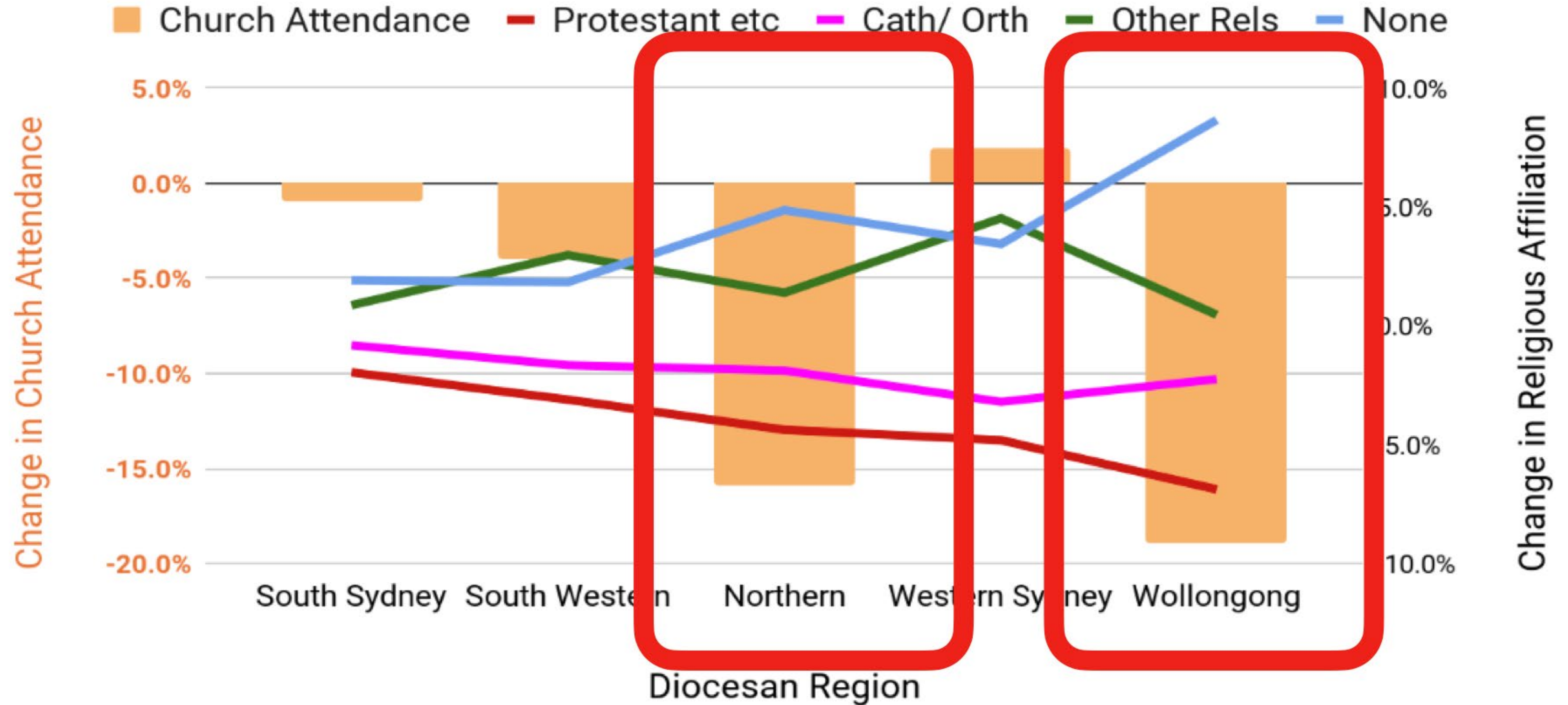


South West - 24 declined, 27 grew



# Church Attendance vs. Census Religious Affiliation

Change from 2013-2023 (Diocesan Regions) and 2016-2021 (census)



- Green is 'Above diocesan average'
- Red is 'Below diocesan average'

Key Mission Indicator	NCLS YEAR	Diocese	REGION				
			Northern	South Sydney	South Western	Western Sydney	W'gong
Measure		Overall					
Members talking intentionally about faith with others	2016	<b>19%</b>	17%	19%	22%	20%	18%
	2021	<b>21%</b>	19%	22%	24%	20%	20%
Members who invite others to church	2016	<b>39%</b>	37%	43%	42%	40%	38%
	2021	<b>32%</b>	31%	36%	33%	33%	29%
Newcomers	2016	<b>8%</b>	7%	10%	9%	8%	7%
	2021	<b>5%</b>	5%	8%	5%	5%	5%
Much growth in faith among members	2016	<b>46%</b>	43%	47%	51%	48%	46%
	2021	<b>39%</b>	36%	40%	41%	41%	37%
Devotions every day/most days	2016	<b>43%</b>	42%	42%	44%	42%	45%
	2021	<b>47%</b>	47%	45%	49%	45%	49%
Use of gifts and skills encouraged	2016	<b>25%</b>	22%	25%	29%	26%	23%
	2021	<b>25%</b>	23%	27%	29%	25%	22%
Level of NESB attenders	2016	<b>18%</b>	17%	24%	32%	20%	7%
	2021	<b>17%</b>	16%	21%	20%	22%	5%
Retention of member's children	2016	<b>63%</b>	63%	61%	62%	64%	64%
	2021	<b>64%</b>	63%	62%	63%	66%	64%

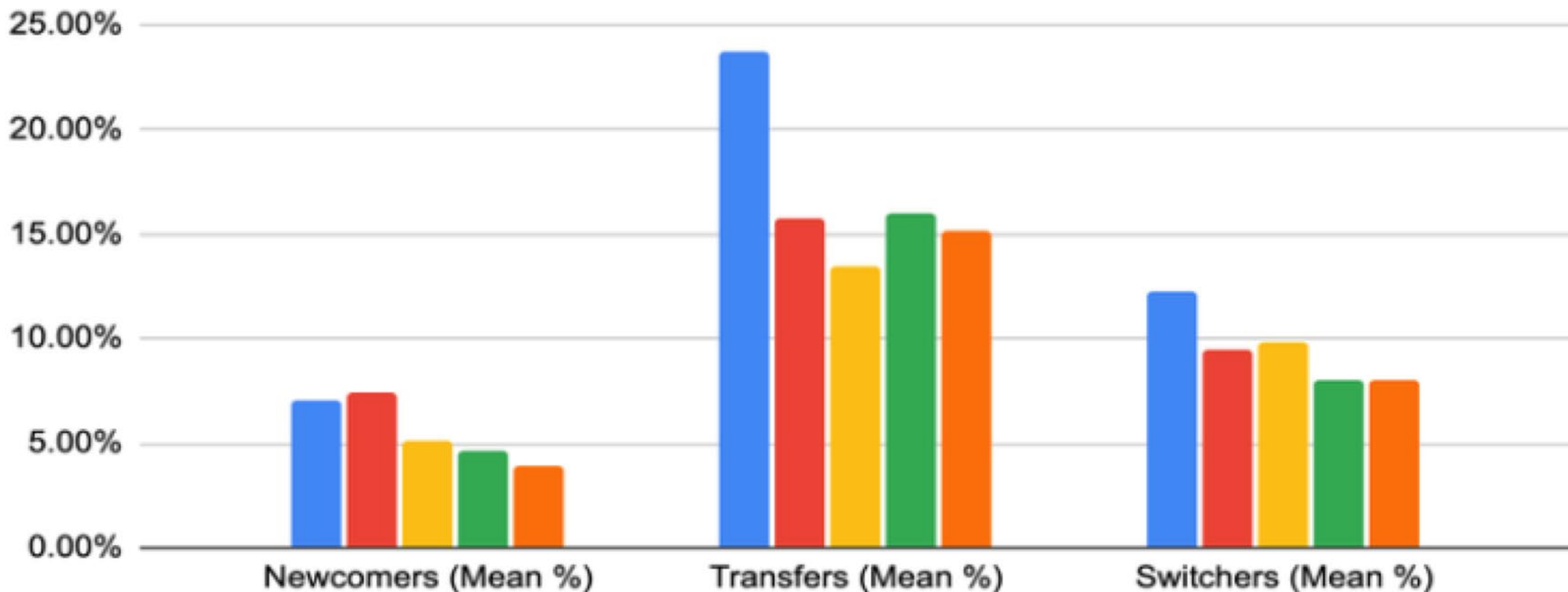
- Green is 'Above diocesan average'
- Red is 'Below diocesan average'

Key Mission Indicator	NCLS YEAR	Diocese	REGION				
			Northern	South Sydney	South Western	Western Sydney	W'gong
Measure		Overall					
Members talking intentionally about faith with others	2016	<b>19%</b>	17%	19%	22%	20%	18%
	2021	<b>21%</b>	19%	22%	24%	20%	20%
Members who invite others to church	2016	<b>39%</b>	37%	43%	42%	40%	38%
	2021	<b>32%</b>	31%	36%	33%	33%	29%
Newcomers	2016	<b>8%</b>	7%	10%	9%	8%	7%
	2021	<b>5%</b>	5%	8%	5%	5%	5%
Much growth in faith among members	2016	<b>46%</b>	43%	47%	51%	48%	46%
	2021	<b>39%</b>	36%	40%	41%	41%	37%
Devotions every day/most days	2016	<b>43%</b>	42%	42%	44%	42%	45%
	2021	<b>47%</b>	47%	45%	49%	45%	49%
Use of gifts and skills encouraged	2016	<b>25%</b>	22%	25%	29%	26%	23%
	2021	<b>25%</b>	23%	27%	29%	25%	22%
Level of NESB attenders	2016	<b>18%</b>	17%	24%	32%	20%	7%
	2021	<b>17%</b>	16%	21%	20%	22%	5%
Retention of member's children	2016	<b>63%</b>	63%	61%	62%	64%	64%
	2021	<b>64%</b>	63%	62%	63%	66%	64%

- Green is 'Above diocesan average'
- Red is 'Below diocesan average'

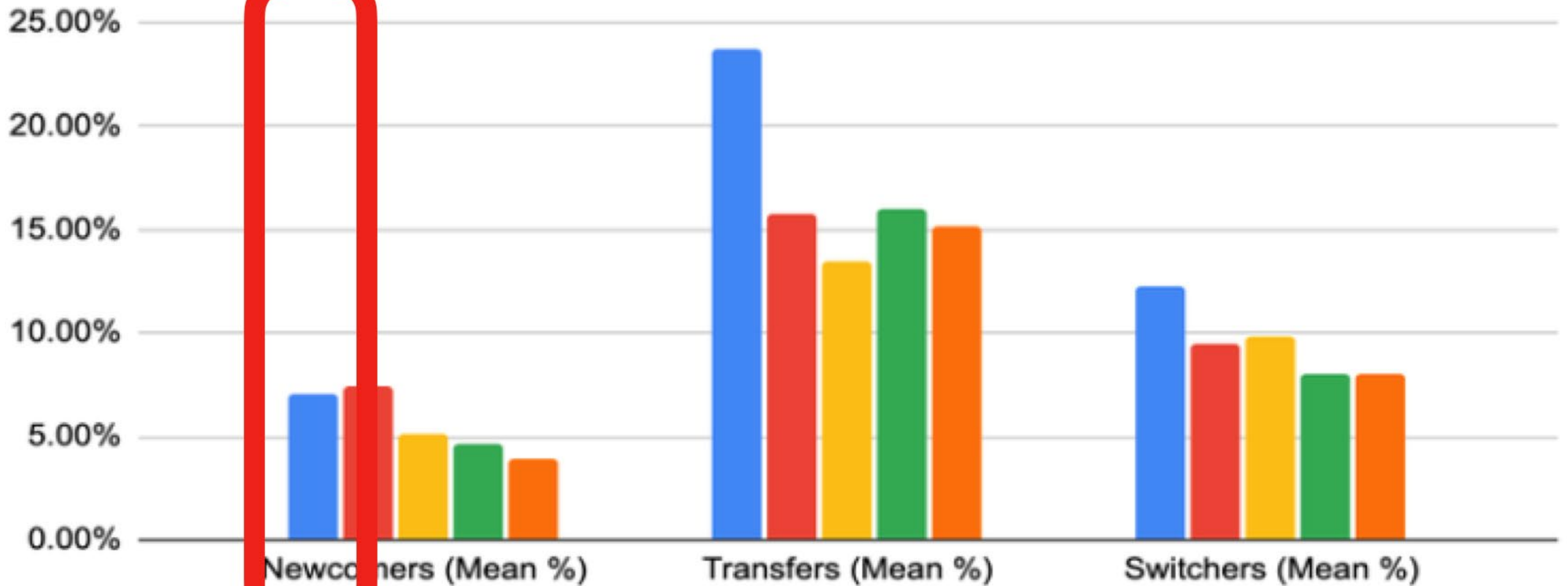
Key Mission Indicator	NCLS YEAR	Diocesan	REGION				
			Northern	South Sydney	South Western	Western Sydney	W'gong
Members talking intentionally about faith with others	2016	19%	17%	19%	22%	20%	18%
	2021	21%	19%	22%	24%	20%	20%
Members who invite others to church	2016	39%	37%	43%	42%	40%	38%
	2021	32%	31%	36%	33%	33%	29%
Newcomers	2016	8%	7%	10%	9%	8%	7%
	2021	5%	5%	8%	5%	5%	5%
Much growth in faith among members	2016	46%	43%	47%	51%	48%	46%
	2021	39%	36%	40%	41%	41%	37%
Devotions every day/most days	2016	43%	42%	42%	44%	42%	45%
	2021	47%	47%	45%	49%	45%	49%
Use of gifts and skills encouraged	2016	25%	22%	25%	29%	26%	23%
	2021	25%	23%	27%	29%	25%	22%
Level of NESB attenders	2016	18%	17%	24%	32%	20%	7%
	2021	17%	16%	21%	20%	22%	5%
Retention of member's children	2016	63%	63%	61%	62%	64%	64%
	2021	64%	63%	62%	63%	66%	64%

# New Arrivals



New Arrivals

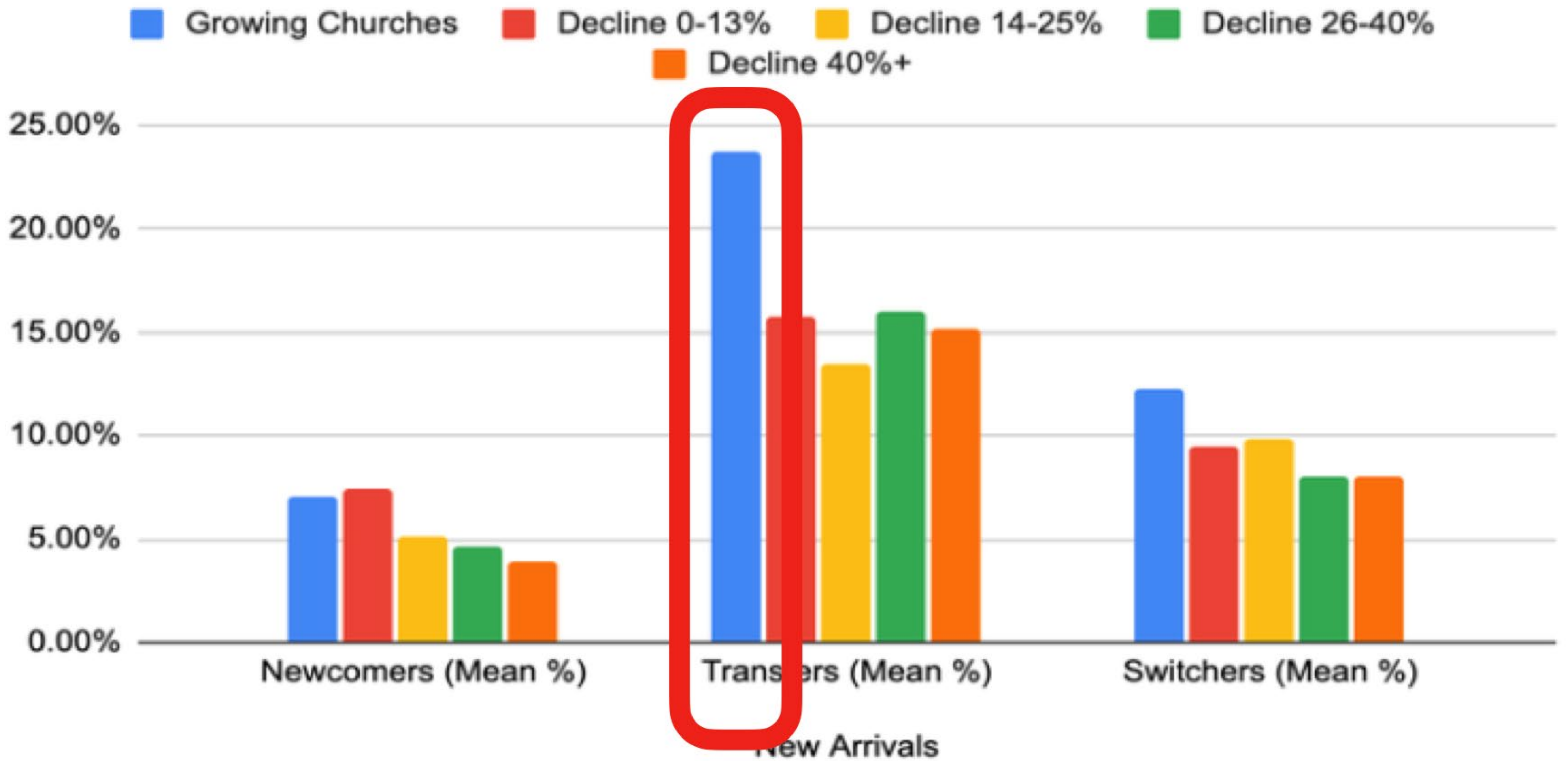
# New Arrivals



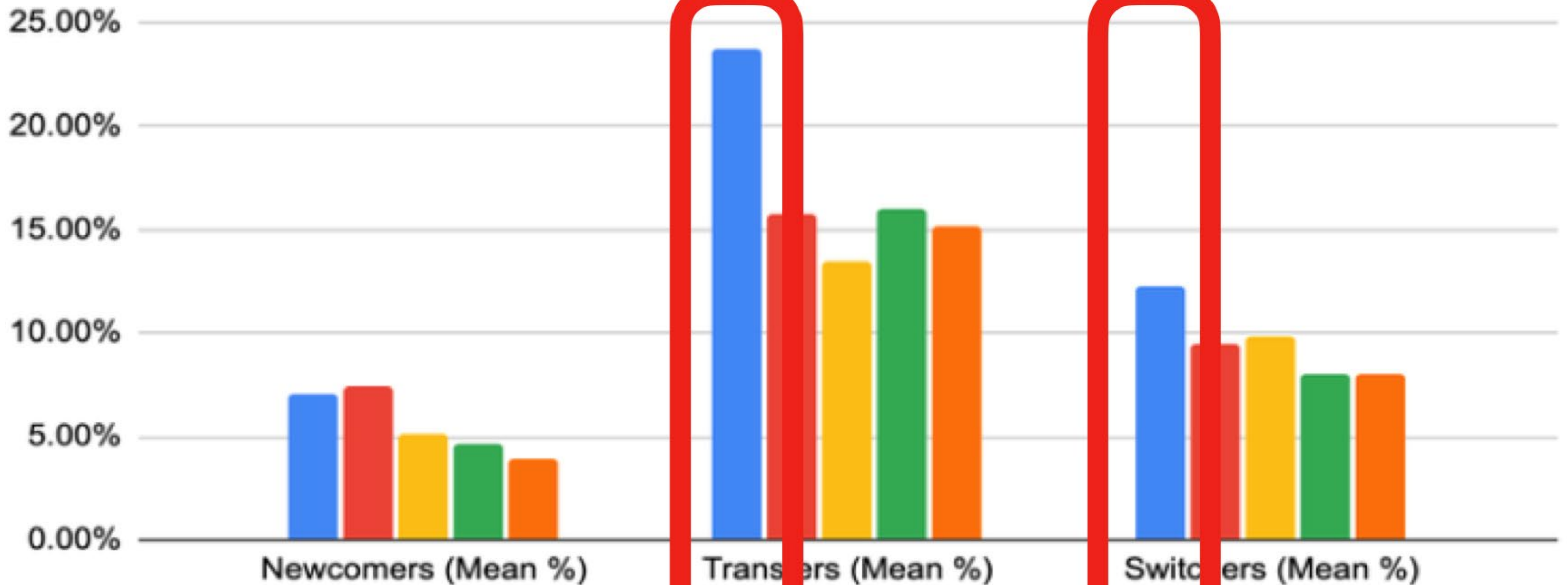
New Arrivals



# New Arrivals



# New Arrivals



New Arrivals

