

# Property Matters

Spring 2020

Anglican Church Property Trust Diocese of Sydney

## **Covid-19 – Updates to commercial leasing regulations**

On 24 October new regulations replaced the initial NSW regulations around retail and commercial leases in regard to Covid-19. The new regulations clarify which leases the regulations apply to and when lessees are eligible for the consideration under the regulations. If you would like some further information please contact your Parish Property Services regional manager. The new regulations can be found at the link below, along with the code on which they are based.

[Retail and other commercial leases \(Covid-19\) Regulation no 2. 2020](#)

[National Code of Conduct SME Commercial Leasing Principles during COVID-19](#)

## **National Trust Appeals**

If you have buildings with a heritage listing, you might be interested to know that the National Trust of Australia (NSW) has a scheme where they will set up a tax deductible appeal fund on behalf of the parish. Donors to the appeal can get a tax deduction and funds can be used for work that is specified in the appeal. Even preventative and ongoing maintenance can be included in an appeal. For further information please contact Penny Barletta at [pxb@sydney.anglican.asn.au](mailto:pxb@sydney.anglican.asn.au).

## **Property Maintenance**

We need your help! We are developing some resources to help parishes plan for and carry out regular property maintenance. If you have any tools or tricks that have helped you manage property maintenance, please email them through to Penny Barletta at [pxb@sydney.anglican.asn.au](mailto:pxb@sydney.anglican.asn.au).

## **Insurance Excesses Increases**

2020 was a big year for Diocesan insurance renewals. As you have no doubt seen from your personal situation, insurance is becoming more and more expensive following a series of extraordinary natural disasters around NSW over the past 12 months. The ACPT and Standing Committee were keen to keep the cost of parish insurance as low as possible, while ensuring that parish assets remain adequately covered. To achieve this, the Standing Committee determined that a higher level of self-insurance will be assumed over the coming year. Integral to that was a review of the \$500 claim excess on the industrial special risk insurance product (ISR) - buildings and contents insurance - that has applied for over a decade. As a result of that review, from 31 August 2020, the excess payable on insurance claims has been increased to \$1,000 for the first claim by a parish in a single insurance year, \$1,500 for a second claim and \$2,000 for a third and subsequent claims.

If you have insurance related questions please contact Cindy Wong on [cpw@sydney.anglican.asn.au](mailto:cpw@sydney.anglican.asn.au).

## **Parish Property Services is hiring staff**

The team that produces this newsletter is looking for an assistant. If you, or anyone you know might be interested, please take a look at here: <https://www.sds.asn.au/sds-employment-opportunities>

## How diverse is my suburb?

Have you ever wondered who is in your neighbourhood? SBS (the tv station) have created an interactive database using information from the last census. You can search on your suburb to find details about the ancestry, age, religion and birthplace of your neighbours. You can find it here: [How diverse is my suburb?](#)

## Maps of Regions and Mission Areas

While you are investigating your suburb, you might also be interested to know what parishes are in your region and mission area. Updated maps have just been added to the SDS website, and can be found here: [https://sds.asn.au/diocesan-regions-and-regional-councils?menu\\_id=10](https://sds.asn.au/diocesan-regions-and-regional-councils?menu_id=10)

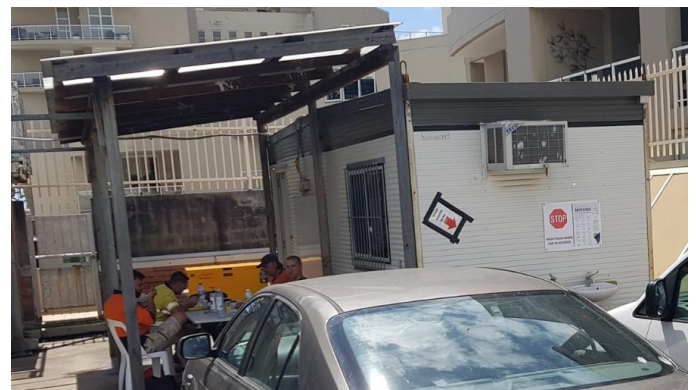


### Manly – Corso redevelopment

The air of faded grandeur that characterised the shops along the Corso in the care of the parish of Manly has passed, with a once in 50 year development that is nearing completion. In addition to the beautifully renovated building façade (above), the parish has managed to build two additional storeys of parish and community facilities. The works will be completed in time for you to take a look next time you take the ferry to Manly for a summer outing.

### From site office to Sunday School room

They might not look like much, but this shed, along with one other, has served a great purpose, and is going to keep on giving to the Diocesan mission. Used as site sheds for the Corso shops development project at Manly parish, now that they are no longer needed there, the sheds will be relocated to Riverstone, where they will provide much needed space for storage and children's activities on Sundays.



## Hazardous materials Q & A via zoom

As part of the parish asbestos re-inspection program we are holding question and answers sessions to assist parishes understand their original and new hazardous materials reports. These contain important information on the presence of any asbestos, lead based paint and other materials at your parish buildings. The 1 hour sessions are a great way to hear from the experts and the experiences of other parishes.

The sessions will be held **12pm Tuesday 17<sup>th</sup> November** and **7:30pm Monday 23<sup>rd</sup> November**.

To register please contact Sally Satya at [ssatya@sydney.anglican.asn.au](mailto:ssatya@sydney.anglican.asn.au)

## Greenfields – Stanhope Gardens

In case you missed the news – the new church building at Stanhope Gardens has been completed and is now being used by the congregation – a welcome change to meeting in the local leisure centre. The Archbishop’s New Churches for New Communities (NCNC) raised funds of \$2.5m towards the project. The next NCNC greenfield church building to be built will be at Leppington, where a congregation of 400 people already meet to worship.



## Property Matters – to you!

If there are any issues you would like us to raise through Property Matters, or stories of success (or failure) that you would like to share, please get in touch with any of our team and let us know.

We are also considering running some Property focussed networking/q and a sessions via zoom – to register your interest in joining other parish volunteers to chat about property please email Penny Barletta (right) on [pxb@sydney.anglican.asn.au](mailto:pxb@sydney.anglican.asn.au).



*The following pages of this newsletter are designed to be printed and kept throughout the year for your quick reference. There is one version for each region. We look forward to hearing from you.*



# Parish Property Building Works Leasing and Licensing Insurance Cemeteries and Columbaria Heritage

+ process + training + advisory + resources  
+ planning + referrals + documentation

## Georges River Regional Office

**Peter Lin, Bishop, Georges River**

✉ [plin@sydney.anglican.asn.au](mailto:plin@sydney.anglican.asn.au)

☎ 9265 1573

**James Davidson, Executive Assistant to the Bishop**

✉ [jdavidson@sydney.anglican.asn.au](mailto:jdavidson@sydney.anglican.asn.au)

☎ 0423 386 875

## Parish Property Services – Sydney Diocesan Services

**Scott Lincoln, ACPT Regional Manager**

✉ [sxl@sydney.anglican.asn.au](mailto:sxl@sydney.anglican.asn.au)

☎ 9265 1633 or 0450 007 079

### Insurance

**Cindy Wong ☎ 9265 1679**

✉ [cpw@sydney.anglican.asn.au](mailto:cpw@sydney.anglican.asn.au)

**Sally Satya ☎ 9265 1557**

✉ [ssatya@sydney.anglican.asn.au](mailto:ssatya@sydney.anglican.asn.au)

**Greg Ellem ☎ 9265 1546**

✉ [gxe@sydney.anglican.asn.au](mailto:gxe@sydney.anglican.asn.au)

### Grants

**Judith Harrington ☎ 9265 1578**

✉ [jxh@sydney.anglican.asn.au](mailto:jxh@sydney.anglican.asn.au)

**Georges River  
Region**

# Parish Property Building Works Leasing and Licensing Insurance Cemeteries and Columbaria Heritage

+ process + training + advisory + resources  
+ planning + referrals + documentation

## South Sydney Regional Office

**Michael Stead, Bishop, South Sydney**

✉ [mstead@sydney.anglican.asn.au](mailto:mstead@sydney.anglican.asn.au)

☎ 9265 1598

**Hugh Isaacs, Executive Assistant to the Bishop**

✉ [hisaacs@sydney.anglican.asn.au](mailto:hisaacs@sydney.anglican.asn.au)

☎ 0430 320 549

## Parish Property Services – Sydney Diocesan Services

**Penny Barletta, ACPT Regional Manager**

✉ [pxb@sydney.anglican.asn.au](mailto:pxb@sydney.anglican.asn.au)

☎ 9265 1561 or 0423 895 810

### Insurance

**Cindy Wong** ☎ 9265 1679

✉ [cpw@sydney.anglican.asn.au](mailto:cpw@sydney.anglican.asn.au)

**Sally Satya** ☎ 9265 1557

✉ [ssatya@sydney.anglican.asn.au](mailto:ssatya@sydney.anglican.asn.au)

**Greg Ellem** ☎ 9265 1546

✉ [gxe@sydney.anglican.asn.au](mailto:gxe@sydney.anglican.asn.au)

### Grants

**Judith Harrington** ☎ 9265 1578

✉ [jxh@sydney.anglican.asn.au](mailto:jxh@sydney.anglican.asn.au)

**South Sydney  
Region**

# Parish Property Building Works. Leasing and Licensing Insurance Cemeteries and Columbaria Heritage

+ process + training + advisory + resources  
+ planning + referrals + documentation

## Western Sydney Regional Office

**Gary Koo, Bishop, Western Sydney**

✉ [gkoo@sydney.anglican.asn.au](mailto:gkoo@sydney.anglican.asn.au)

☎ 9265 1603

**Neil Atwood, Archdeacon**

✉ [nta@sydney.anglican.asn.au](mailto:nta@sydney.anglican.asn.au)

☎ 0414 777 841

## Parish Property Services – Sydney Diocesan Services

**Scott Lincoln, ACPT Regional Manager**

✉ [sxl@sydney.anglican.asn.au](mailto:sxl@sydney.anglican.asn.au)

☎ 9265 1633 or 0450 007 079

### Insurance

**Cindy Wong ☎ 9265 1679**

✉ [cpw@sydney.anglican.asn.au](mailto:cpw@sydney.anglican.asn.au)

**Sally Satya ☎ 9265 1557**

✉ [ssatya@sydney.anglican.asn.au](mailto:ssatya@sydney.anglican.asn.au)

**Greg Ellem ☎ 9265 1546**

✉ [gxe@sydney.anglican.asn.au](mailto:gxe@sydney.anglican.asn.au)

### Grants

**Judith Harrington ☎ 9265 1578**

✉ [jxh@sydney.anglican.asn.au](mailto:jxh@sydney.anglican.asn.au)

**Western Sydney  
Region**

# Parish Property Building Works Leasing and Licensing Insurance Cemeteries and Columbaria Heritage

+ process + training + advisory + resources  
+ planning + referrals + documentation

## Northern Regional Office

**Chris Edwards, Bishop, Northern Region**

✉ [cedwards@sydney.anglican.asn.au](mailto:cedwards@sydney.anglican.asn.au)

☎ 9265 1527

**Chris Burgess, Executive Assistant to the Bishop**

✉ [cburgess@sydney.anglican.asn.au](mailto:cburgess@sydney.anglican.asn.au)

☎ 0451 510 848

## Parish Property Services – Sydney Diocesan Services

**Penny Barletta, ACPT Regional Manager**

✉ [pxb@sydney.anglican.asn.au](mailto:pxb@sydney.anglican.asn.au)

☎ 9265 1561 or 0423 895 810

### Insurance

**Cindy Wong** ☎ 9265 1679

✉ [cpw@sydney.anglican.asn.au](mailto:cpw@sydney.anglican.asn.au)

**Sally Satya** ☎ 9265 1557

✉ [ssatya@sydney.anglican.asn.au](mailto:ssatya@sydney.anglican.asn.au)

**Greg Ellem** ☎ 9265 1546

✉ [gxe@sydney.anglican.asn.au](mailto:gxe@sydney.anglican.asn.au)

### Grants

**Judith Harrington** ☎ 9265 1578

✉ [jxh@sydney.anglican.asn.au](mailto:jxh@sydney.anglican.asn.au)

**Northern  
Region**

# Parish Property Building Works Leasing and Licensing Insurance Cemeteries and Columbaria Heritage

+ process + training + advisory + resources  
+ planning + referrals + documentation

## Wollongong Regional Office

**Peter Hayward, Bishop, Wollongong**

✉ [phayward@sydney.anglican.asn.au](mailto:phayward@sydney.anglican.asn.au)

☎ 4201 1801

**Anthony Douglas, Archdeacon**

✉ [adouglas@sydney.anglican.asn.au](mailto:adouglas@sydney.anglican.asn.au)

☎ 4201 1802

## Parish Property Services – Sydney Diocesan Services

**Scott Lincoln, ACPT Regional Manager**

✉ [sxl@sydney.anglican.asn.au](mailto:sxl@sydney.anglican.asn.au)

☎ 9265 1633 or 0450 007 079

### Insurance

**Cindy Wong** ☎ 9265 1679

✉ [cpw@sydney.anglican.asn.au](mailto:cpw@sydney.anglican.asn.au)

**Sally Satya** ☎ 9265 1557

✉ [ssatya@sydney.anglican.asn.au](mailto:ssatya@sydney.anglican.asn.au)

**Greg Ellem** ☎ 9265 1546

✉ [gxe@sydney.anglican.asn.au](mailto:gxe@sydney.anglican.asn.au)

### Grants

**Judith Harrington** ☎ 9265 1578

✉ [jxh@sydney.anglican.asn.au](mailto:jxh@sydney.anglican.asn.au)

**Wollongong  
Region**