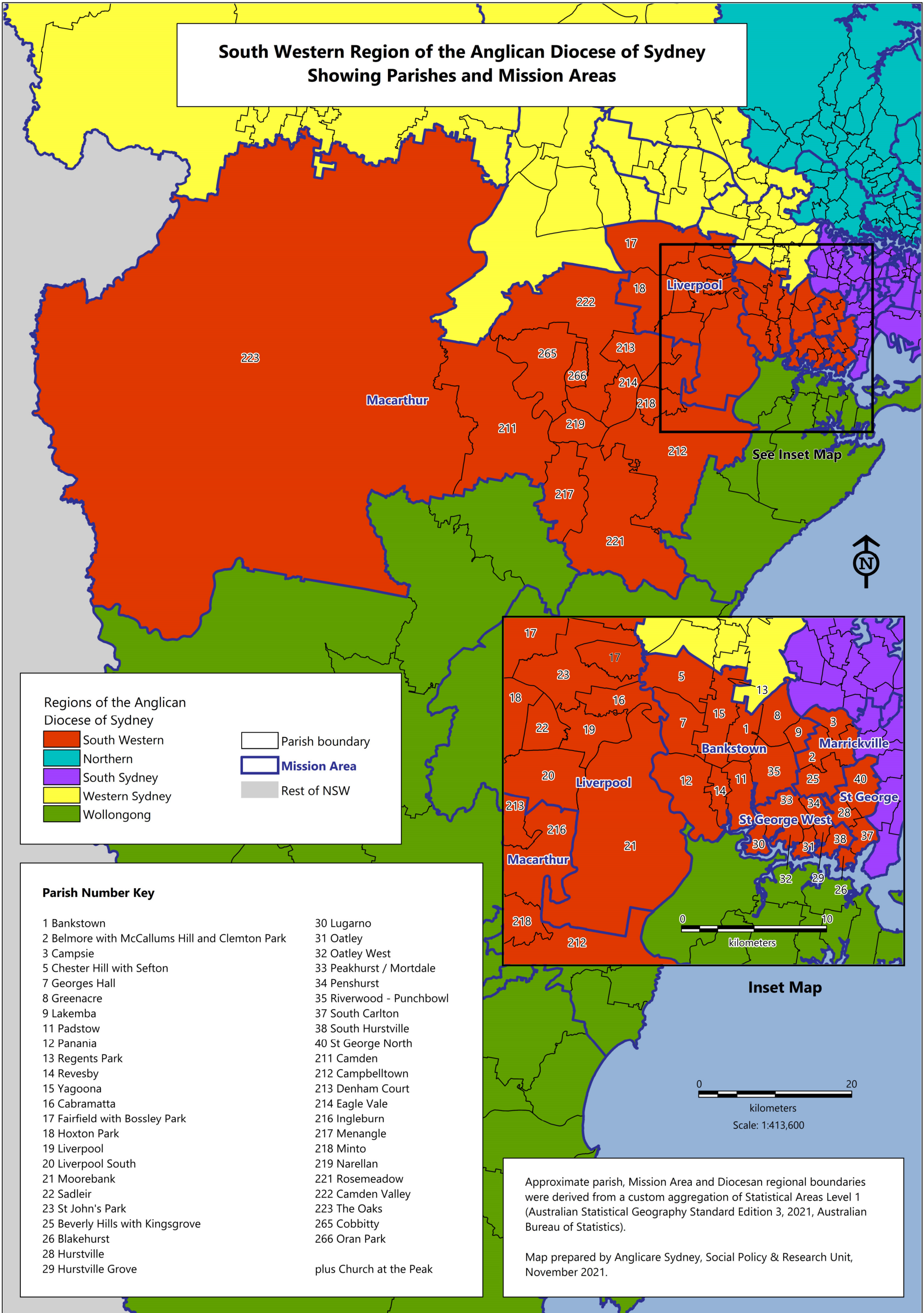


South Western Region of the Anglican Diocese of Sydney Showing Parishes and Mission Areas



Regions of the Anglican Diocese of Sydney

- South Western
- Northern
- South Sydney
- Western Sydney
- Wollongong
- Parish boundary
- Mission Area
- Rest of NSW

Parish Number Key

- | | |
|--|--|
| <ul style="list-style-type: none"> 1 Bankstown 2 Belmore with McCallums Hill and Clemton Park 3 Campsie 5 Chester Hill with Sefton 7 Georges Hall 8 Greenacre 9 Lakemba 11 Padstow 12 Panania 13 Regents Park 14 Revesby 15 Yagoona 16 Cabramatta 17 Fairfield with Bossley Park 18 Hoxton Park 19 Liverpool 20 Liverpool South 21 Moorebank 22 Sadleir 23 St John's Park 25 Beverly Hills with Kingsgrove 26 Blakehurst 28 Hurstville 29 Hurstville Grove | <ul style="list-style-type: none"> 30 Lugarno 31 Oatley 32 Oatley West 33 Peakhurst / Mortdale 34 Penshurst 35 Riverwood - Punchbowl 37 South Carlton 38 South Hurstville 40 St George North 211 Camden 212 Campbelltown 213 Denham Court 214 Eagle Vale 216 Ingleburn 217 Menangle 218 Minto 219 Narellan 221 Rosemeadow 222 Camden Valley 223 The Oaks 265 Cobbitty 266 Oran Park <p style="text-align: center;">plus Church at the Peak</p> |
|--|--|

Approximate parish, Mission Area and Diocesan regional boundaries were derived from a custom aggregation of Statistical Areas Level 1 (Australian Statistical Geography Standard Edition 3, 2021, Australian Bureau of Statistics).

Map prepared by Anglicare Sydney, Social Policy & Research Unit, November 2021.

0 10 20
kilometers
Scale: 1:413,600